

THIS PROJECT WILL HELP GUYANA AND SURINAME TO:

- enhance **governance and protection** of the coastal and marine area and resources
- improve **knowledge** of the coastal and marine environment
- foster **socio-economic development** compatible with ocean health
- improve **marine spatial management**
- facilitate **collaborative processes** with all ocean stakeholders
- propose key coastal and marine areas for **conservation status**

MARINE SPATIAL PLANNING

A process that brings together multiple users or stakeholders of a coastal and marine area – including energy, industry, government, tourism, fishermen and local communities – to make informed and coordinated decisions about how to use and manage our shared marine resources sustainably.



www.project-msp.org



GREEN HERITAGE FUND SURINAME

Financed by The European Union



PROMOTING INTEGRATED OCEAN AND PARTICIPATORY GOVERNANCE IN GUYANA AND SURINAME

THE EASTERN GATE TO THE CARIBBEAN





PROJECT AREA

The project covers **the coastal and marine areas of Suriname and Guyana**. The project area supports important fisheries, major nursery grounds, spawning grounds and a rich diversity of marine species and is of both regional and global significance.



LEAD IMPLEMENTING PARTNERS

- WWF Guianas
- Green Heritage Fund Suriname
- Nature Conservation Division of the Suriname's Forest Service



PROJECT DURATION

4 year project

January 2017 - December 2020



PARTICIPATORY APPROACH

The project will support and facilitate **active stakeholder involvement** in all stages of the project.

This participatory approach to marine decision-making will increase the knowledge and related human uses of the coastal and marine environment amongst all participating stakeholders by **allowing information to be available to everyone** and will ensure that **all active stakeholders' interest and perspective are included**.



ACTIVITIES & OUTPUTS



LEGISLATIVE REVIEW AND GAP ANALYSIS

Assessment of the current national legislation regarding marine management and existing gaps and barriers, to provide guidance on what is required to enable implementation of marine spatial management.



STAKEHOLDER ANALYSIS

The stakeholder analysis will ensure that actors whose interests should be taken into account when developing or implementing marine spatial plans have been accurately identified, as well as their different roles.



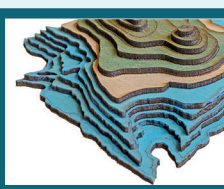
CAPACITY NEEDS ASSESSMENT

Identification of gaps in capacity (both from a technical and engagement standpoint) so the project can fill capacity gaps to enable planners and decision makers to develop and engage in marine and coastal planning.



EQUIVALENCE-GAP ANALYSIS FOR INDIGENOUS PEOPLE AND GENDER

This analysis will ensure equity and participation of these marginalized groups, and that their needs are explicitly addressed in the decision-making process of this project.



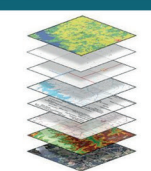
PARTICIPATORY 3-DIMENSIONAL MODELLING (P3DM)

P3DM is a community based process to enhance participatory marine spatial planning which integrates local spatial knowledge with topographic data to produce physical 3D models.



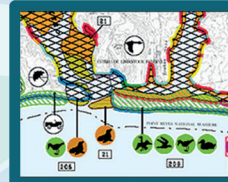
ENGAGEMENT PLATFORM

The engagement platform enables regular and effective engagement and interaction among all stakeholders, for example through multi-stakeholder group meetings, a project website.



LIVING GIS MARINE ATLAS

The living GIS marine atlas integrates all local knowledge, published/unpublished and satellite derived data and features numerous layers of important information to inform decision-making and management actions related to the marine realm.



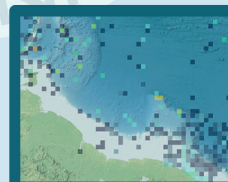
ENVIRONMENTAL SENSITIVITY INDEX MAPS

The environmental sensitivity index maps provide a summary of the coastal and marine resources that are at risk from human activities.



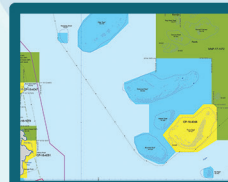
OIL AND GAS NATIONAL GUIDELINES

National guidelines to provide guidance for risk and impact mitigation on coastal and marine habitats and wildlife and to direct oil and gas companies in exploration and production activities.



OCEAN DATA REPOSITORY

The ocean data repository will contain all available oceanographic and coastline data.



MARINE SPATIAL ZONING PLAN

The marine spatial zoning plan provides a framework for management, zonation and governance needs and arrangements of the coastal and marine environment.